



The Invasive Species Database Program at NYNHP manages New York’s Invasive Species Database through iMapInvasives (“iMap”), the Watercraft Inspection Stewardship Program Application (WISPA), as well as derivative data products for the benefit of NYS agency staff, conservation organizations, and the public.

2024 Program Highlights



Revamped the **NY Terrestrial Invasive Species Prioritization Tool**, combining updated spatial information on ecological value and invasive species risk factors to help partners direct their work:

nynhp.org/projects/terrestrial-invasive-prioritization/.



Worked with partners to conduct **40 iMap trainings**, reaching **900+ people**. View some recordings at youtube.com/user/iMapInvasives.



Maintained a suite of **5 mobile tools** for collecting iMap data, ranging from single-point presence and not-detected records to multi-species polygons and treatments: nyimapinvasives.org/report-an-invasive.



Launched the **Waterbody Lookup Tool** for users to generate quick species lists by waterbody: nyimapinvasives.org/waterbody-lookup-tool.



Conducted annual analyses of the data and published results to online viewers. Highlights include the *Species Tiers*, *Management Outcomes Viewer*, and *WISPA analyses*: nyimapinvasives.org/data-and-maps.

2024 in the Numbers

iMapInvasives (iMap) Record Type	Entered in 2024	All Years (since 2010)
Confirmed Presence Records	43,677	353,462
Not-detected Records	21,809	87,953
Treatment Records	6,604	19,758

iMap Users Submitting Data in NY	Total Users
Unique Users Submitting Presence Observations	916
Unique Users Submitting Not-Detected Records	241

iMap Survey Effort	Entered in 2024	All years (since 2010)
Total Searched Area Records	47,398	204,846
Acres of Searched Areas	196,774	1,836,929

WISPA Records	2024	Total (Since 2018)
Total Data Records - <i>Launching and receiving</i>	219,195	1,664,299
Any Organisms or Debris Detected before Launching	6,064	40,688
Intercepts: Invasives Species Detected before Launching	2,013	14,230

Software to collect, share, and visualize data

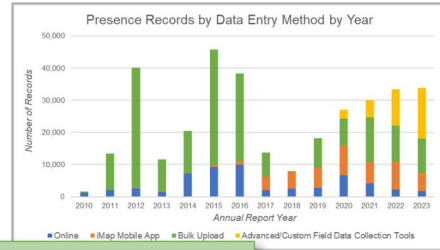
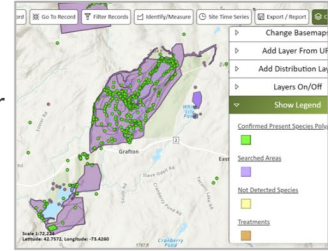


Provide mobile and online tools for stakeholders that leverage current mapping technology to collect, share and visualize data. Collaborate with national iMapInvasives software developers.



Manage invasive species data for New York

Continue to curate, build and serve high-quality datasets for stakeholders to use for strategic decision-making and prioritization.

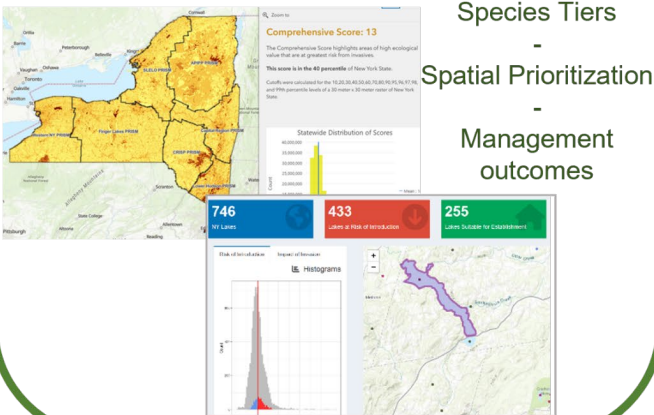


New York Natural Heritage Program

NYNHP Invasive Species Database Program

Analysis for Prioritization

Create and maintain analytical tools and products derived from the invasive species data that help advance the work of stakeholders and lead to strategic decision-making.



Species Tiers

Spatial Prioritization

Management outcomes

Build community around the database

Increase the early detection capacity of NYS by building a community around the database through trainings, outreach and networking, and contributing to a statewide summit.



The Invasive Species Database Program is funded by the NY Environmental Protection Fund administered through the NYS Department of Environmental Conservation.